

Townhouses in Cancelada

Reference: R5012077



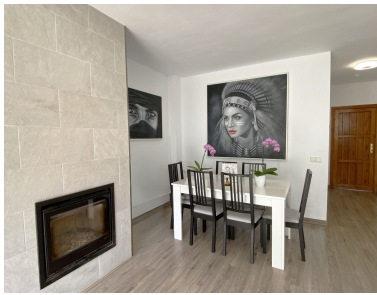
Bedrooms: 3
Status: Sale

Bathrooms: 2
Property Type: Townhouses Parking places: by request

M²: 200

Price: 645,000 €
Printing day : 25th July 2025





Overview: Elegant townhouse in a charming Mediterranean complex located in the heart of Andalusia, just minutes from Estepona. This small, meticulously maintained residential development offers a unique blend of comfort, quality, and a warm, family-friendly atmosphere. Ideally positioned for golf enthusiasts, it's just a five-minute walk from La Resina Golf Course and close to prestigious resorts such as Anantara Villa Padierna, as well as the Alferini and El Paraíso golf courses. Families will appreciate the convenience of having the Atlas International School within walking distance and the private hospital Hospitén only a three-minute drive away. A pedestrian path leads directly to the beach in just 10 minutes, while a padel club and a brand-new sports center are located right across the street, perfect for those who enjoy an active lifestyle. Inside the property, the ground floor features a bright living room, a functional kitchen, a bathroom with a shower, and a private patio overlooking the garden—ideal for outdoor dining and relaxed moments with friends and family. The home offers a practical design with access to a spacious basement that includes a utility room and a private garage, easily adaptable into a gym, office, or extra living area. Upstairs, there are three comfortable bedrooms and an elegant bathroom, with the possibility of extending into the attic to create an additional bedroom and bathroom. The location offers excellent connectivity to Puerto Banús, Marbella, San Pedro de Alcántara, and Estepona, where residents can enjoy some of the best restaurants, boutiques, and leisure options the Costa del Sol has to offer. This is an ideal setting for those seeking a peaceful yet well-connected lifestyle between the sea, the golf courses, and the best of southern Spain.

Features: