

Apartment in Nueva Andalucía

Reference: R4974682



Bedrooms: 3

Bathrooms: 2

M<sup>2</sup>: 143

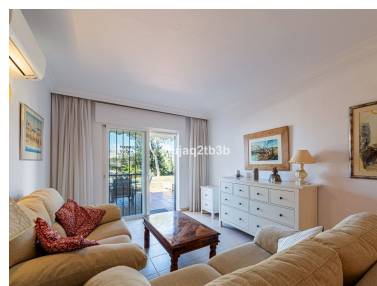
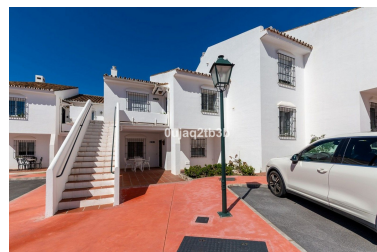
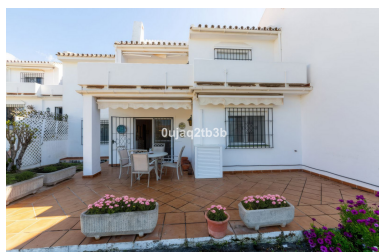
Price: 760,000 €

Status: Sale

Property Type: Apartment

Parking places: by request

Printing day : 21st June  
2026



---

Overview: Ground floor apartment with three bedrooms and two bathrooms, featuring a large living room and direct access to a spacious garden, with ample bedrooms. One of the three bedrooms is currently converted into a small living room but can easily be turned back into a bedroom. Its west-facing orientation ensures plenty of natural light, adding to the comfort of being on the ground floor with a large terrace and direct access to beautiful communal tropical gardens. The apartment is spacious with plenty of natural light and large bedrooms, featuring a large wardrobes for all your storage needs. Andalucía Garden Club is a development with wide streets and landscaped spaces, filled with vibrant flowers, palm trees, and various types of plants. It offers easy access and plenty of parking space for owners and guests. It is considered one of the most sought-after developments for buyers looking for an exclusive location in the best area of Marbella: Puerto Banús – Nueva Andalucía. Perfectly located near the well-known Marbella casino, this apartment offers incomparable comfort, within walking distance of Puerto Banús due to its close proximity. It is also close to major shopping centers, upscale restaurants, top-tier schools, and efficient public transport. This apartment has the best possible location in the area with easy access to the main highways, making commuting simple. The gated community offers security and tranquility with large gardens, two swimming pools (one for children), and a tennis court. Experience the feeling of living in one of the best developments in Marbella, and you and your family will enjoy a wonderful decision.

---

#### Features:

Pool, Air conditioning, Private garden, 24H Security, Parking, Luxury, Resale