

Townhouses in Nueva Andalucía

Reference: R4949308



Bedrooms: 4

Bathrooms: by request

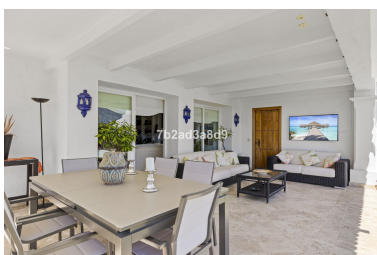
M²: 255

Price: 1,290,000 €

Status: Sale

Property Type: Townhouses Parking places: by request

Printing day : 10th
December 2025



Overview: Unique and spacious townhouse located next to the bull ring of Puerto Banus. Fully private and quiet. Spectacular views towards La Concha. Walking distance to Puerto Banus, the beach, shops and restaurants. Main floor. Entrance hallway and guest toilet. Large living and dining area with fireplace and direct access to the ample covered and open terraces and a private garden. Fully fitted new kitchen with Bosch and Liebherr appliances and breakfast area. Possible one or two guest bedrooms sharing a bathroom. Upper floor. Master bedroom en suite with dressing area and access to a private terrace. Two guest bedrooms en suite. Nice well maintained garden with chill out area and BBQ. Possibility to put a private swimming pool. Dedicated parking space. Community pool.

Features:

Pool, Air conditioning, Mountain views, Private garden, Alarm system, Parking, Golf, Holiday Home, Resale