

Apartment in Benahavís

Reference: R4895623



Bedrooms: 3

Bathrooms: by request

M²: 139

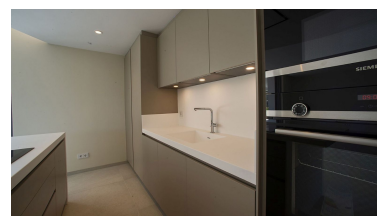
Price: 1,350,000 €

Status: Sale

Property Type: Apartment

Parking places: by request

Printing day : 27th
December 2024



Overview: The Apartment blends nature, tradition and modern design to merge perfectly into the idyllic surroundings of the stunning natural park. Their elevated south and southwest facing mountainside position ensures panoramic views and makes the most of the natural light and beautiful Mediterranean sun. South East facing ground floor apartment with interior and exterior areas are carefully designed so that both are perfectly integrated in a spectacular space. Living room has access to a patio and terrace have been designed to be able to enjoy them all year round with covered spaces. Design kitchens integrated in the living room without giving up the practicality of having a separate laundry room. Direct access to a covered terrace of 89m² and a private garden of 52m². The apartment also has a separate patio of 30m². All bedrooms with dressing room and bathroom en-suite in main bedroom, complete the distribution of the apartment where enjoying the sun, sea and nature all year round is a reality. Is part of the master project Real de la Quinta Residential Country Club Resort, a residential resort, integrated in the foothills of the Sierra de las Nieves overlooking La Concha mountain. A unique location, with its views, the lake and features such as the golf course, the El Lago Club, a 5* hotel and a commercial area.

Features:

Pool, Air conditioning, Heating, Sea views, Mountain views, Golf, Private garden, Lift, 24H Security, Parking, Holiday Home, Investment, Luxury, Resale