

Apartment in Benahavís

Reference: R4872616



Bedrooms: 2

Bathrooms: by request

M²: 117

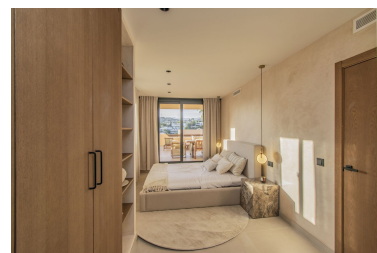
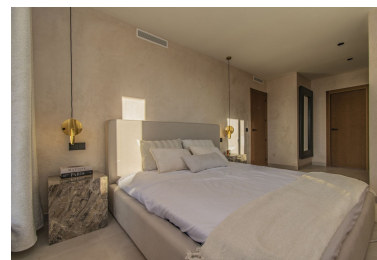
Price: 590,000 €

Status: Sale

Property Type: Apartment

Parking places: by request

Printing day : 14th January
2025



Overview: SPECTACULAR PROPERTY WITH LARGE TERRACE IN THE GOLDEN TRIANGLE Wonderful property completely renovated, with a cozy contemporary style, located in the lower part of Benahavis, very close to Guadalmina, next to all kinds of services such as Atalaya international school, supermarket, restaurants...etc, surrounded by the best golf courses in the area (Atalaya, Los Arqueros, El Paraiso, Guadalmina...etc and just a few minutes by car from the beach, San Pedro and Puerto Banus. Spacious property consisting of a total of two bedrooms, two bathrooms plus a toilet, living room with a fantastic open kitchen and wonderful 65m2 terrace with beautiful views. Includes parking space and storage room. Established within an exclusive urbanization with 24-hour security, outdoor pool, SPA area and beautiful gardens. An ideal property for clients who want to enjoy a property ready to move into in one of the most sought-after areas of the Costa del Sol.

Features:

Pool, Air conditioning, Heating, Mountain views, Lift, Private garden, Parking, Holiday Home, Investment, Resale