

Townhouses in Nueva Andalucía

Reference: R4671619



Bedrooms: 3

Bathrooms: 2

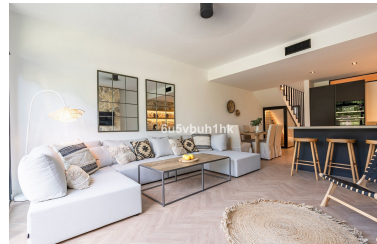
M<sup>2</sup>: 120

Price: 795,000 €

Status: Sale

Property Type: Townhouses Parking places: by request

Printing day : 18th January 2025



Overview: Exquisite south-facing townhouse conveniently located in the heart of the golf valley of Nueva Andalucía, established within a prestigious gated residential complex boasting round-the-clock security. Adorned with verdant communal gardens, a sparkling swimming pool, and facilities including tennis and padel courts, the complex provides an idyllic retreat for discerning residents. The complex boasts lush communal gardens, a swimming pool, tennis court, and padel court. With views overlooking the frontline Aloha Golf Course, the property is conveniently located just a short drive away from various local amenities, Puerto Banus, and the beaches. Throughout the interior, exceptional high-quality materials and the redesigned space truly deserves to be seen to be fully appreciated. The ground floor features an open-plan layout, highlighted by a striking kitchen fitted with high-end appliances, a dining room featuring a custom-made wine bodega, and a tastefully furnished living room complete with a fireplace. This area opens onto a covered terrace with an al fresco dining area, providing direct access to the communal gardens. Completing this level are two guest bedrooms sharing a bathroom. The first floor comprises a master bedroom with a private terrace offering beautiful views of the Aloha Golf course. Additionally, there is an expansive terrace equipped with a barbecue, ideal for entertaining and enjoying outdoor dining experiences.

---

Features:

Air conditioning, Mountain views, Golf, Private garden