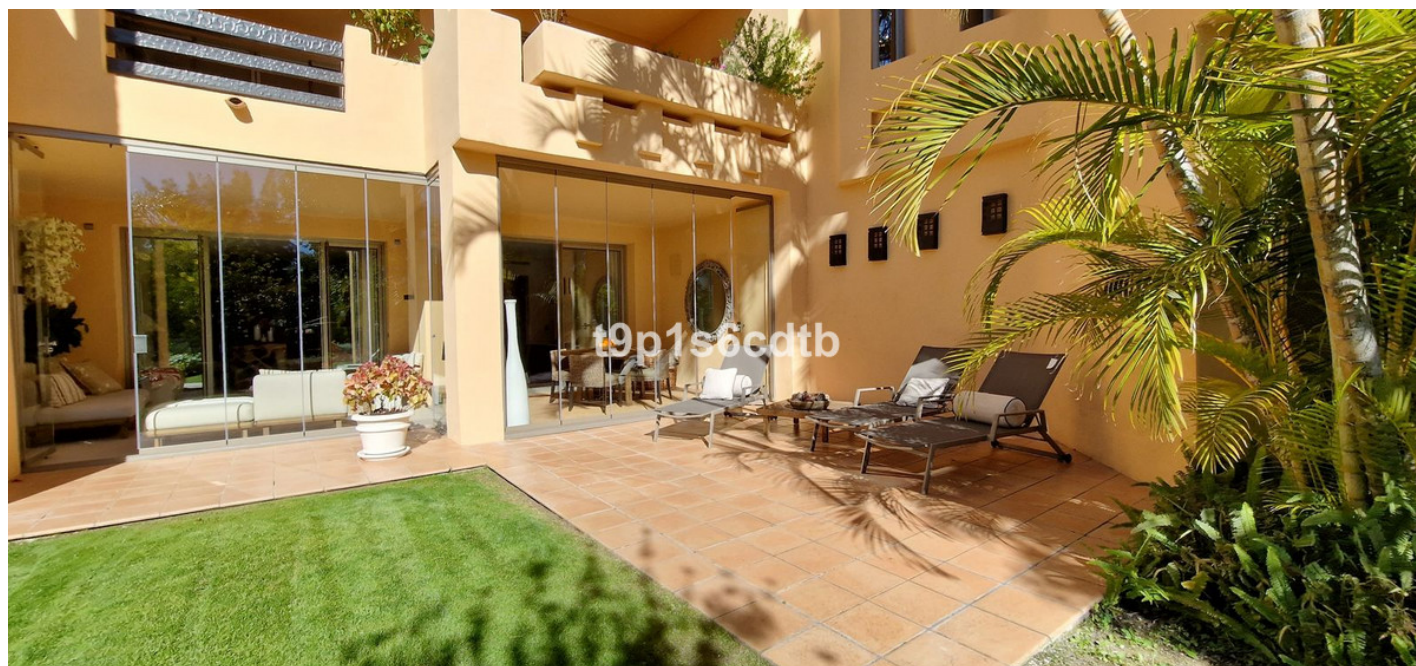


Apartment in The Golden Mile

Reference: R4646935



Bedrooms: 3

Bathrooms: 3

M²: 247

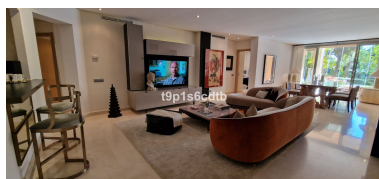
Price: 1,500,000 €

Status: Sale

Property Type: Apartment

Parking places: by request

Printing day : 13th January
2025



Overview: Will be AVAILABLE, back in the market for visits FROM JANUARY 2025 Fantastic ground floor apartment, recently renovated and redecorated in a luxurious modern cozy style, is located in the exclusive Mansion Club urbanization, next to Sierra Blanda and the Golden Mile of Marbellí. A renowned complex with a closed complex, designed by the famous architect Melvin Villarroel and built to the highest quality standards and a characteristic style with which the creations of the aforementioned architect are distinguished. Its location just 2km from the center and the beach makes it the ideal destination to enjoy peacefully, in a safe and private environment, while being connected to everything. The house has an entrance hall, a fully furnished and equipped kitchen and an adjoining laundry room, converted into a breakfast room. Living/dining room with access to the covered terrace closed with glass curtains and direct access to a large garden area. 3 bedrooms and 2 bathrooms. Marble floors, air conditioning hot/cold, underfloor heating, satellite television, alarm system, a parking space and storage room in the communal underground garage. This exclusive and renowned urbanization also enjoys lush subtropical gardens and streams with waterfalls, a private spa, an indoor heated pool, another outdoor pool with a waterfall and a gym, as well as a 24-hour security/concierge service, in a privileged location just a few minutes from the city of Marbella, Puerto Banús and Nueva Andalucía. An IDEAL property AS A PERMANENT, TEMPORARY HOME AND/OR AS AN INVESTMENT. Also available for RENT LONG TERM from September 2024.

Features:

Pool, Air conditioning, Heating, Private garden, Lift, Alarm system, 24H Security, Parking, Golf, Holiday Home, Investment, Luxury, Resale