

Plot in Las Chapas

Reference: R4360702



Bedrooms: by request

Bathrooms: by request

M²: 21,458

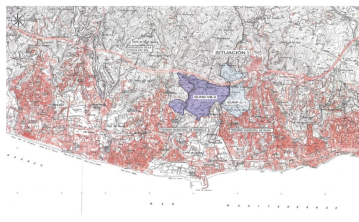
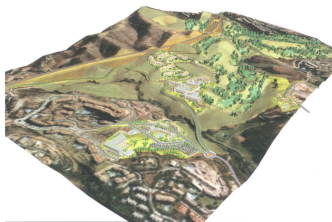
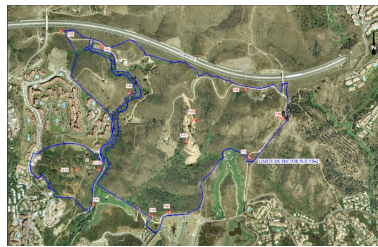
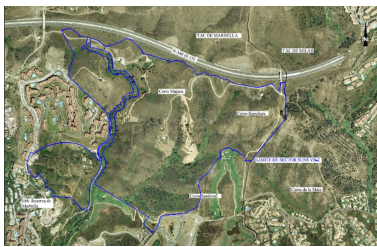
Price: 2,146,000 €

Status: Sale

Property Type: Plot

Parking places: by request

Printing day : 10th January 2025



Overview: This sector has a total area of 710,458 m², of which 21,458 m² corresponds to this farm. It represents 3.02% of rights and obligations. The sector has a buildable area of 57,234.29 m² for Free Income Housing IN LOW DENSITY, 380 houses in Poblado Mediterráneo and 11 isolated houses. Buildable area of 40,362 m² for Hotels. 3,000 m² Economic Activities Golf Club and Commercial Area Which makes a total of 100,596.29 m² of surface area. Therefore $100,596.29 \text{ m}^2 \times 3.02\% = 3,038 \text{ m}^2$ of buildable area, which would correspond to this plot.

Features:

Sea views, Mountain views, Golf, Resale