

Plot in Benahavís

Reference: R4237330



Bedrooms: by request

Bathrooms: by request

M²: 2,952

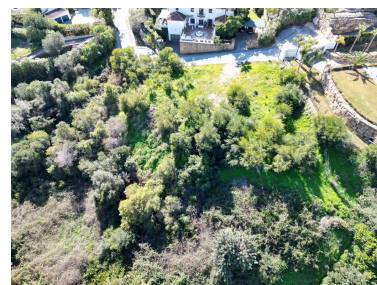
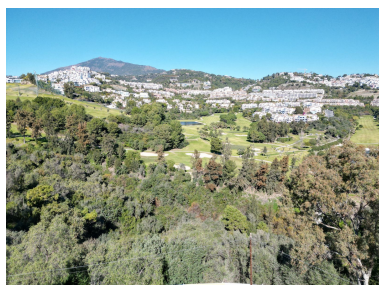
Price: 950,000 €

Status: Sale

Property Type: Plot

Parking places: by request

Printing day : 20th January
2025





Overview: Investment opportunity in Puerto Del Almendro, Benahavis. Plot with total m² of 2.952m. South / East facing plot with views of the sea on the 1st floor. Frontline golf of Los Arqueros. Min. Plotsize 3.000 m² with a build percentage of 20% / 590.4 m². The plot is licenced for a house covering up to 590.4 m² of ground floor plus first floor and terraces. The basement can be the same size of the groundfloor. Can build up to 7m in height.

Features:

Sea views, Mountain views, Golf