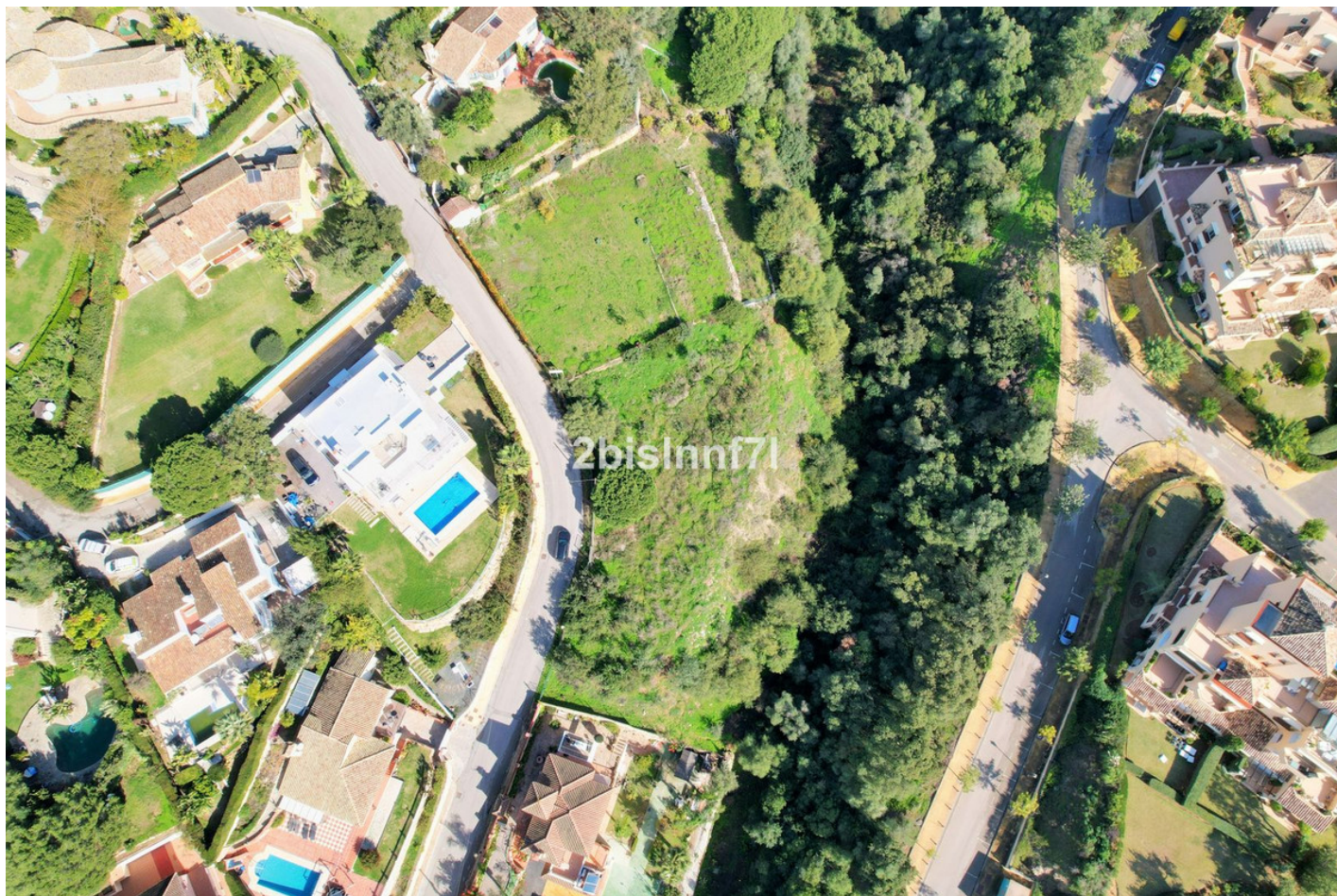


Plot in Elviria

Reference: R4178989



Bedrooms: by request

Bathrooms: by request

M²: 1,620

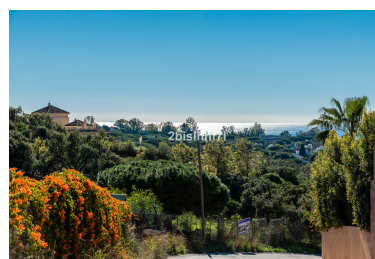
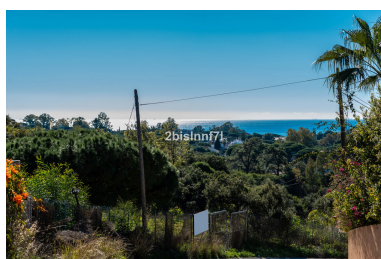
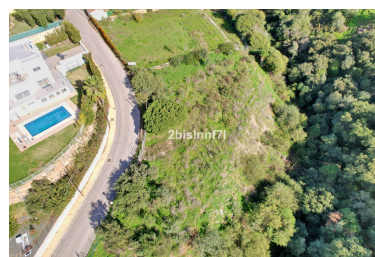
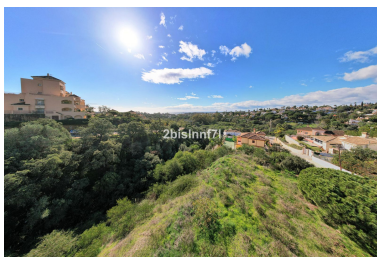
Price: 680,000 €

Status: Sale

Property Type: Plot

Parking places: by request

Printing day : 10th January
2025



Overview: Large (1.620m²) Building PLOT in central Elviria walking distance to commercial center beach and restaurants with sunny position and some sea views Design your stylish modern dream villa According to the classification of the plot, UE-4 (0.20), the urban parameters to be met, * Occupation: 25% of the plot area. the maximum occupation would be 405.00 m². * Buildable: 0.20 m² / m². maximum buildable would be 306.00 m². * Retranqueos to public and private boundaries: 3 m * Maximum height: PB + 1 (7.0 m), according to PGOU 86 *At the moment this plot is affected by a reduction in the buildability due to being close to the "green zone".

Features:

Investment