

Plot in Estepona

Reference: R3876388



Bedrooms: by request

Bathrooms: by request

M²: 16,839

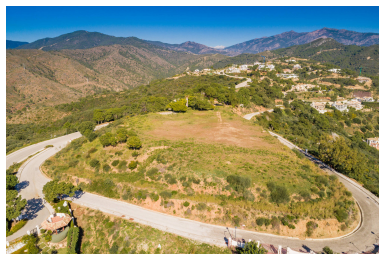
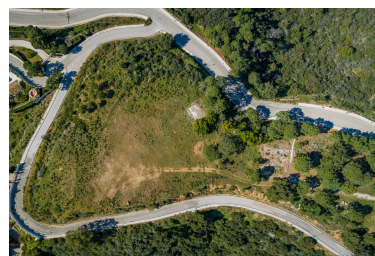
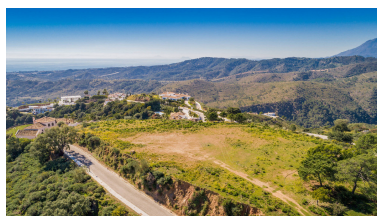
Price: 3,900,000 €

Status: Sale

Property Type: Plot

Parking places: by request

Printing day : 7th May 2026



Overview: South orientated plot located in the secure community of Montemayor near to Benahavis, with incredible 360-degree views of the Mediterranean Sea, Gibraltar, mountains and on a clear day, the north African coastline. The flat plot is 16.839m² in size, with 13.969m² classified as residential and allowing for construction. A custom-made project has also been developed for an ample villa, as well as a development for up to six villas. Additionally, 2.870m² are classified as commercial and can be used for these purposes. Montemayor is picturesque estate situated in the hills of the Benahavis municipality. Overlooking the Mediterranean coastline, it delivers fantastic views and is cocooned in natural surroundings. With an established green belt area, Montemayor offers low density living amongst the Andalusian landscape. It resides less than one hour drive from both Malaga and Gibraltar airports and is less than a 10-minute drive from Benahavis, a mountainside town famous for its restaurants and beautiful surroundings.

Features:

Sea views, Mountain views