

Plot in Benahavís

Reference: R3768247



Bedrooms: by request

Bathrooms: by request

M<sup>2</sup>: 4,427

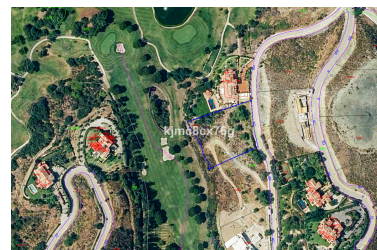
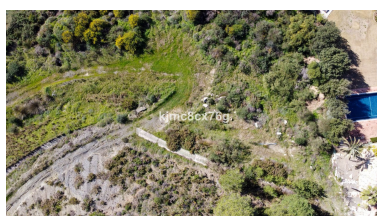
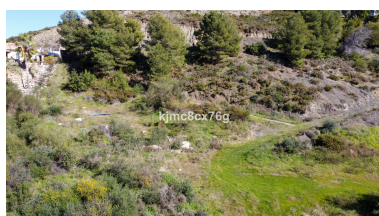
Price: 750,000 €

Status: Sale

Property Type: Plot

Parking places: by request

Printing day : 15th January 2025



Overview: This is one of the very last front-line golf plots available on the very prestigious Marbella Club Golf Resort and has magnificent views to the golf course, social club and the sea. The plot has a total area of 4,427 m<sup>2</sup> and a building allowance of 490 m<sup>2</sup>, which refers to built areas above ground only (it does not include basements, patches or terraces). The Marbella Golf Club Course is a perfect blend of nature, golf, unique restaurant and service excellence. The club has highly developed streets and security, etc and sits amongst the hills of Benahavis. This magnificent golf course sits in the heart of the Costa del Sol and enjoys spectacular views of Gibraltar, the African coastline, Mediterranean Sea and the surrounding mountains: a truly wonderful place to live. Attached to the course, the club boasts the famous Marbella Club Equestrian Centre and its unique luxury livery stables. The Equestrian Centre is proud to hold the Spanish National Show Jumping Competitions and has a state of the art modern arena - perfect to learn to ride a horse in.

---

Features: